



TECHNICAL SPECIFICATIONS

UPDATED – MARCH 2024

For further details on any information in this document, please contact:

Chloe Harkin (Technical Manager)

T: 02871272781

E: chloeh@millenniumforum.co.uk

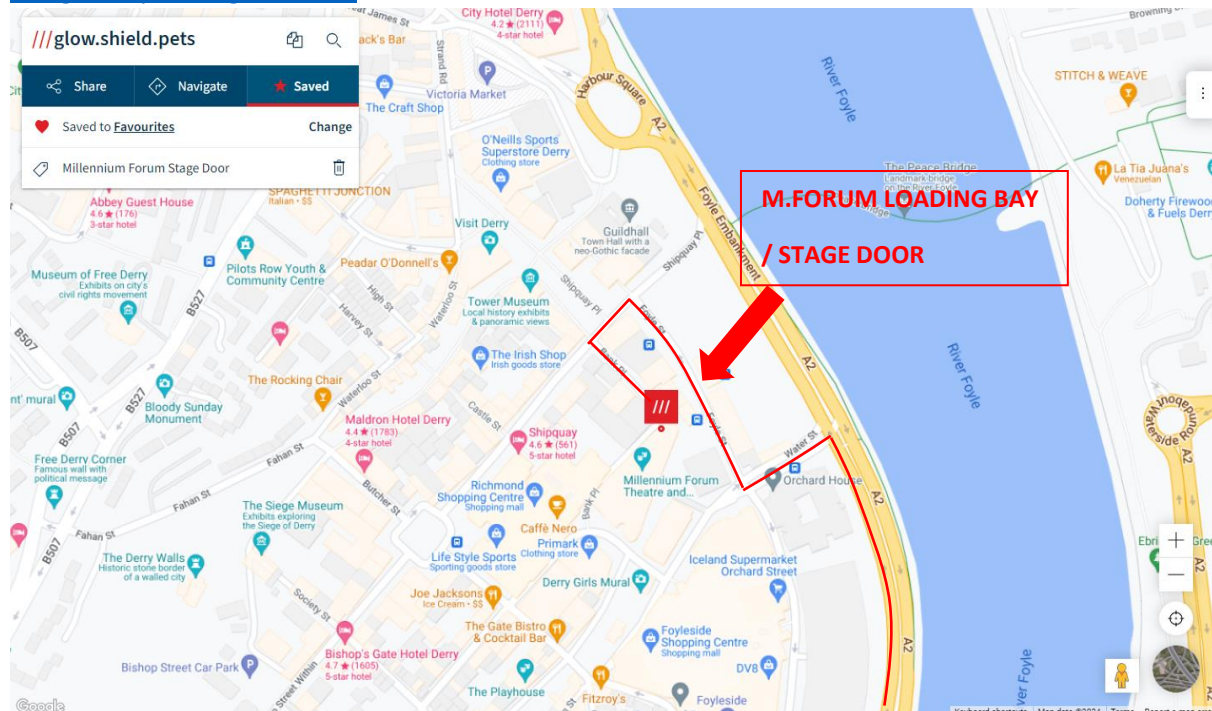
**Millennium Forum Theatre and Conference Centre
3 Newmarket Street
Derry/Londonderry
BT48 6EB**

Production Access

For Stage Door – follow directions for Bank Place.

[what3words Navigation Link](#)

[Google Maps Navigation Link](#)



CONTENTS

General Information	p.3
Parking, Backstage Rooms, Wardrobe, Orchestra Pit, and Accessibility aids	
Stage	p.4
Dimensions, Fly system, Power, Motors / Forestage Lifts, Soft Goods, Prompt Corner, Access, Rostra, Piano	
Lighting	p.5
Control, Dimmers, IWBs, Follow Spots, Dimensions	
Sound	p.5
Control, PA, Amps and Monitors	
Equipment List	p.6
Lighting, Sound, Miscellaneous, Broadcast	
Health and Safety	p.8
Drawings	p.9
Stage Plans, Hanging Plot	

GENERAL INFORMATION

Loading Bay and Parking

Passenger Vehicles: Parking at stage door is extremely limited. Vehicles parked without permission may be subject to a penalty charge notice. There are numerous pay and display car parks nearby.

Delivery Vehicles: Scenic deliveries are via the loading bay at the rear of the theatre. The access road to our loading bay is fairly narrow, and there is only space for 1 trailer at a time. Alternative parking for any additional tipped trailers can be arranged via the Technical Manager. 1x trailer may be left at the loading bay.

Sleeper Buses: Permission for sleeper buses must be sought in advance.

Backstage Rooms

Floor	Name	Capacity	Ensuite	Wi-Fi
Ground Floor	Accessible Quick Change	1	✓	✓
	Quick Change	1		✓
	Company Office	2		✓
Second Floor	DR1	2	✓	✓
	DR2	2	✓	✓
	DR3	4	✓	✓
	DR4	4	✓	✓
	DR5	9	✓	✓
	DR6	9	✓	✓
	DR7	4	✓	✓
	DR8	5	✓	✓
	DR9	13	✓	✓

Wardrobe Wardrobe is on level 1A – 1 level up from stage. Stacked washer / dryer. Space for two touring machines. Iron and ironing board available upon request.

Orchestra Pit The pit can accommodate various sizes of band and orchestra. All involve seat removal. Contact us for further detail.

Accessibility Aids An infrared hearing system is installed in the theatre. Venue technicians can assist your team with patching into it during load-in. An audio description system is also available- please contact for more details. A quiet room is available for audience members during all performances equipped with show relay AV.

STAGE

Access	Loading bay at 40' trailer height loading directly onto stage right. We do <u>not</u> carry additional truck ramps in-house.
Stage	Proscenium with small thrust (<1m). Flat, wood with matt black finish. 12m x 12m not including wing space.
Dimensions	Stage front to Setting Line (upstage of Fire Curtain): 0.9m Setting Line to Back Wall (upstage of Fire Curtain): 11.5m Pros. Width: 11m Pros. Height: 7m Grid Height: 16.65m
Flying System	Operated from a raised platform Stage Right. 35 available bars double purchase counterweight system, including 1 up-and-down bar each side. 5x available hemp bars. All bars are 12m in length with some 1m extensions available.
Stage Power	Single Phase – DSL – 3x 63A, 1x 32A, 1x 16A (CeeForm 1ph) Three Phase – DSR: 1x 125A, 1x 63A, 1x 32A (CeeForm 3ph) 400A Power Lock connection available DSR. Note: We have a 63A/3ph routed from SR to SL.
Additional Motors	2x 1tonne lodestar motors installed downstage of the pros. arch for external PA Hang. Charges apply. Rigging from the grid is possible – we do not carry additional motors / riggers in house. Please contact for further detail.
Forestage Lifts	2 forestage lifts for orchestra pit, or to extend the apron by 1.9m (L2 only) or 3.6m (L1 +2). Seat kills apply to all (Stall Rows A-B for L2 and Rows A-D for L1+2). We also have a tilting floor mechanism for flat floor configurations.
Soft Goods	We have in black serge: borders x5, soft leg pairs x4, full tabs, 1x cyclorama, and 1x 12x6m LED star cloth. Assorted black serge covered masking flats.
Rostra	There are 20 2x1m and 5 1x1m decks in-house, along with a selection of various height legs.
Prompt Corner	Prompt desk with cue light system, talk back, stage monitor – positioned DSL.
Access Equipment	2x Zarges Skymaster combination ladder, JLG 41AM Vertical Lift, Scaff Tower
Piano	Steinway Model D. Please contact tech. manager to confirm availability. Hire and tuning costs apply.
Audience Treads	Treads for stage access to the audience is possible- but requires seat kills. Please advise as early as possible as seats may otherwise be sold.

LIGHTING

Control	GrandMA2 on pc with control board, wing and 2x touch screens. 1x Swisson ARTnet 8-way node 2x 5-way active 5-pin DMX buffers 2x 3+5-pin active DMX buffers
Control Position	FOH – Rear of Stalls – max area 2m x 3m (to also include sound control) Distance to stage – 17m
Dimmers	ADB Eurotrack – 195 ways of stage lighting (24x 25a, rest 15a with 3x 15a orchestra pit dimmers and 38x non-dims)
IWBs	1x 12m 12-way 1x 12m 24-way 2x 12m 18-way 1x cyc bar with 5 4x5kw circuits and 4 single 5kw circuits
Follow spots	2x Robert Juliat Victor 1800W MSR 7°-14.5°. These are positioned in the upper circle.
Dimensions	FOH Bridge 1 to front of stage 10.2m FOH Bridge 2 to front of stage 13m Circle Bar to front of stage 13.2m Upper Circle Bar to front of stage 15.4m

SOUND

Control	Allen & Heath D-Live C3500 with CDM64 Mix Rack (64 in / 32 out) and 2x DX168 Stage Boxes (16 in / 8 out) 1x Yamaha DM1000
Control Position	FOH – Rear of Stalls – max area 2m x 3m (to also include LX control) Distance to stage – 17m
PA	1 Nexo Geo System (including 4x front-fill speakers, and 8x circle, 4x upper circle delay speakers) 12x S805 -5 degree cabinets 2x S830 -30 degree cabinets 4x CD 12-P sub basses 2x NC 241 crossovers 3x vortex 6 Camco Amps
Amps and Monitors	8x Martin LE1500 Wedges 5x Yamaha stereo 1000W amplifiers

EQUIPMENT LIST

	Stock	Hire Charges (net per day)	Updated Notes
Lighting Equipment			
Chauvet R3 LED moving head	12	-	
Chauvet Maverik MKII LED profiles	12	-	
Chauvet R3 LED Spot	4	-	
Elation Chorusline 16 LED Battens	8	-	
ADJ Jolts	6	-	
Martin Atomic 3000 Strobe	1	-	
ACP 1004C Quad Floods 1200w	5	-	
ACP 1004H Groundrow Floods 1200w	6	-	
F101 Fresnels 1200w x13-59 (w/ barn doors)	16	-	
F201 Fresnels 1200w x8.5-54 (w/ barn doors)	8	-	
C103 Fresnels 1200w x7-61 (w/ barn doors)	18	-	
DW105 Zoom Condenser Spotlights 1200w x15-38	16	-	
DS105 Condenser Spotlights 1200w x15-31	19	-	
DSN105 Zoom Condenser Spotlights 1200w x12-23	9	-	
DS205 Zoom Condenser Spotlights 2000w x15-31	5	-	
Robert Juliat Victor 1800W MSR 7°-14.5°	2	-	Operator charges apply
Thomas Parcans 1000w (CP62s)	48	-	
DS51 Zoom Profile Spotlights 650w x18-38	4	-	
Single Cell ADB 1k Floods	12	-	
14m multi with 6-channel drop boxes and spiders	4	-	
Sound Equipment			
Sennheiser G3 Radio Packs (incl. belt pouches)	16	£16/unit/day	
Sennheiser G3 Hand Held	4	£16/unit/day	
Shure SM58	7	-	
Shure SM57	1	-	
Sennheiser E945	1	-	
PCC-160 Crown Float Mics	2	-	
Audio Technica AT857QML	2	-	
Audio Technica AES100	4	-	
C414	4	-	
DI Box	8	-	
Audix D6 (Bass Drum)	1	-	
Audix D4 (Bass Drum / Floor Tom)	1	-	
Audix D2 (Tom)	2	-	
Audix i-5 (snare)	1	-	
Audix ADx451 (OH / Hi-hat)	2	-	
Tall Mic Stands	14	-	
Short Mic Stands	4	-	
RAT Music Stands	18	-	+1 conductor stand
Misc.			
Cue Lights with trailing cables	8	-	
Canford Comms System	8	-	
Eartec Ultralite Wireless Comms System	8	-	

Unique Hazer	3	-	
Chauvet Cloud 9 Low Foggers	2	Contact to discuss pricing and availability.	
ADJ Smoke Jets	4		
Snow Boy SP machines	4		
DJ Power Cold Spark Machines	2		
Magic FX Effect'ivator 1	1		
Confetti Cannon	2		
Le Maître Pyro Box Pro Stage 6-way	1		
Pyro Box	14		
12x6m LED star cloth	1	-	
Panasonic MZ14 14000lm Laser Projector	1	£140/day	Standard and short throw lenses available.
10'x 16' front projection screen	1	-	
12m x 7m rear projection screen	1	-	Significantly limits stage playing area.
Steinway Model D Grand Piano	1	£150/day	Tuning costs an additional £130+vat (rates may vary).
Multi's			
Full In-house patch system (100+ mic lines and 48 returns)			
15m 12-way sub multi with stage box	2	-	
20m 16-way sub multi with stage box	2	-	
Visitors multi to FOH 40/8 with full passive split	1	-	
Broadcast			
Datavideo HS-1600T 4-channel switcher	1	Charges vary depending on set-up. Please contact to discuss the specific needs of your event.	
PTC-150 HD/SD PTZ Camera	3		
Blackmagic Design Web Presenter	1		
Motors			
1-tonne Lodestar Motors for PA Hang	2	£200 per use	DS L&R of Pros. Arch

HEALTH AND SAFETY

Policy:

Millennium Forum's full Health and Safety Policy and RAMS are available upon request.

C.D.M:

Should your production involve 'construction' work – you will be responsible for adhering to Construction Design and Management Regulations 2015.

Risk Assessments:

We require relevant risk assessments if your production involves any activity that may be characterised as causing significant risk. This includes but is not limited to: pyrotechnics, firearms, naked flames, water, hazardous substances, special effects, lasers, strobes, animals and children. You should also ensure you are able to produce up-to-date certification for any equipment that requires it e.g. PAT, LOLER, Flame proofing etc.

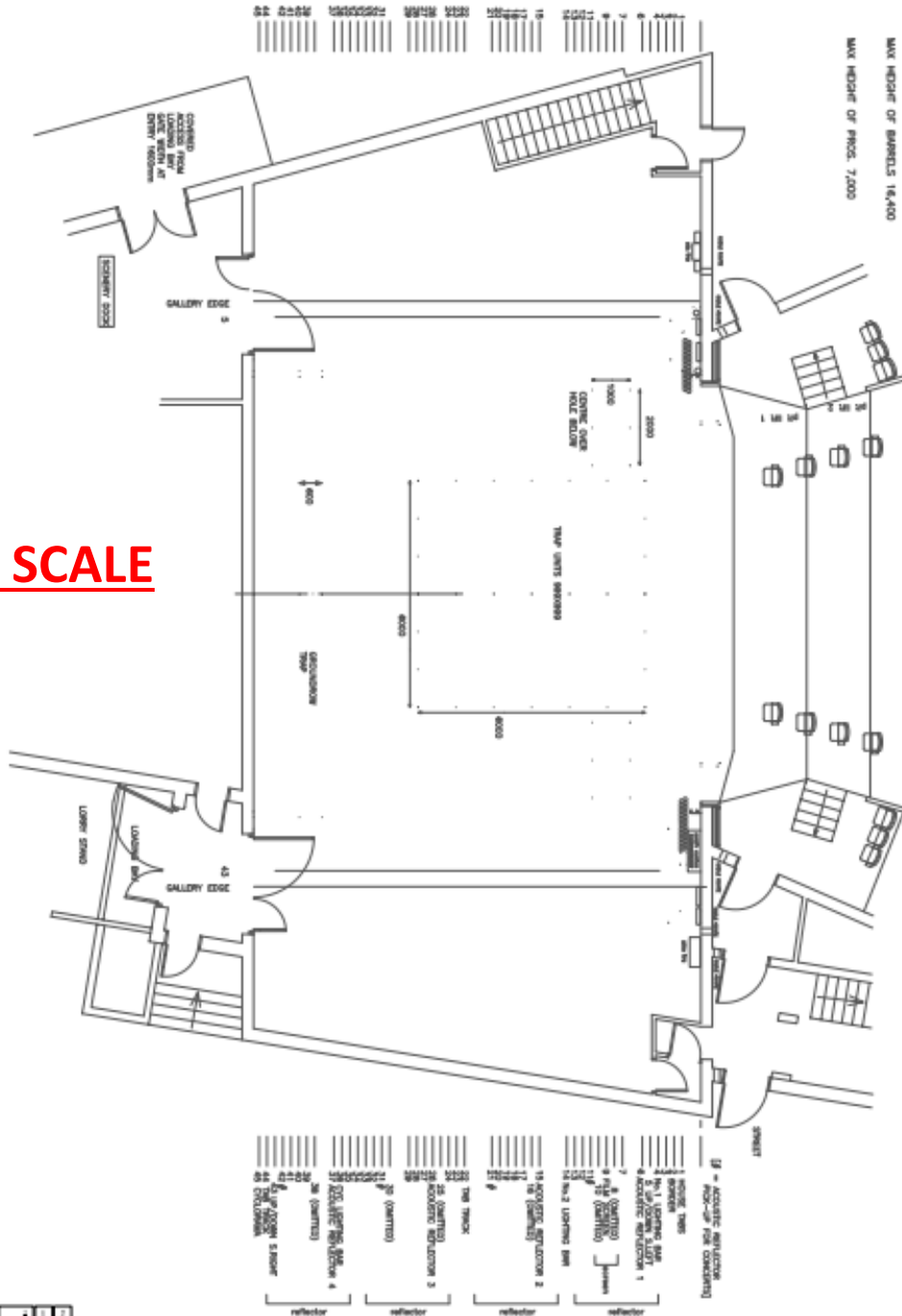
Fire Safety:

Millennium Forum full fire and emergency evacuation policy is available upon request. The procedure for visiting companies can be found posted on the company notice board, in the company manager's room and in all dressing rooms.

You are required to provide us with a full list of the personnel visiting the building with your production or event – along with their call times – so that in the event of an evacuation our fire marshal team has accurate records of personnel in the building. For performance runs of more than one night – there will be a backstage sign-in sheet posted on the company notice board which **must** be used by all visiting company.

PLANS

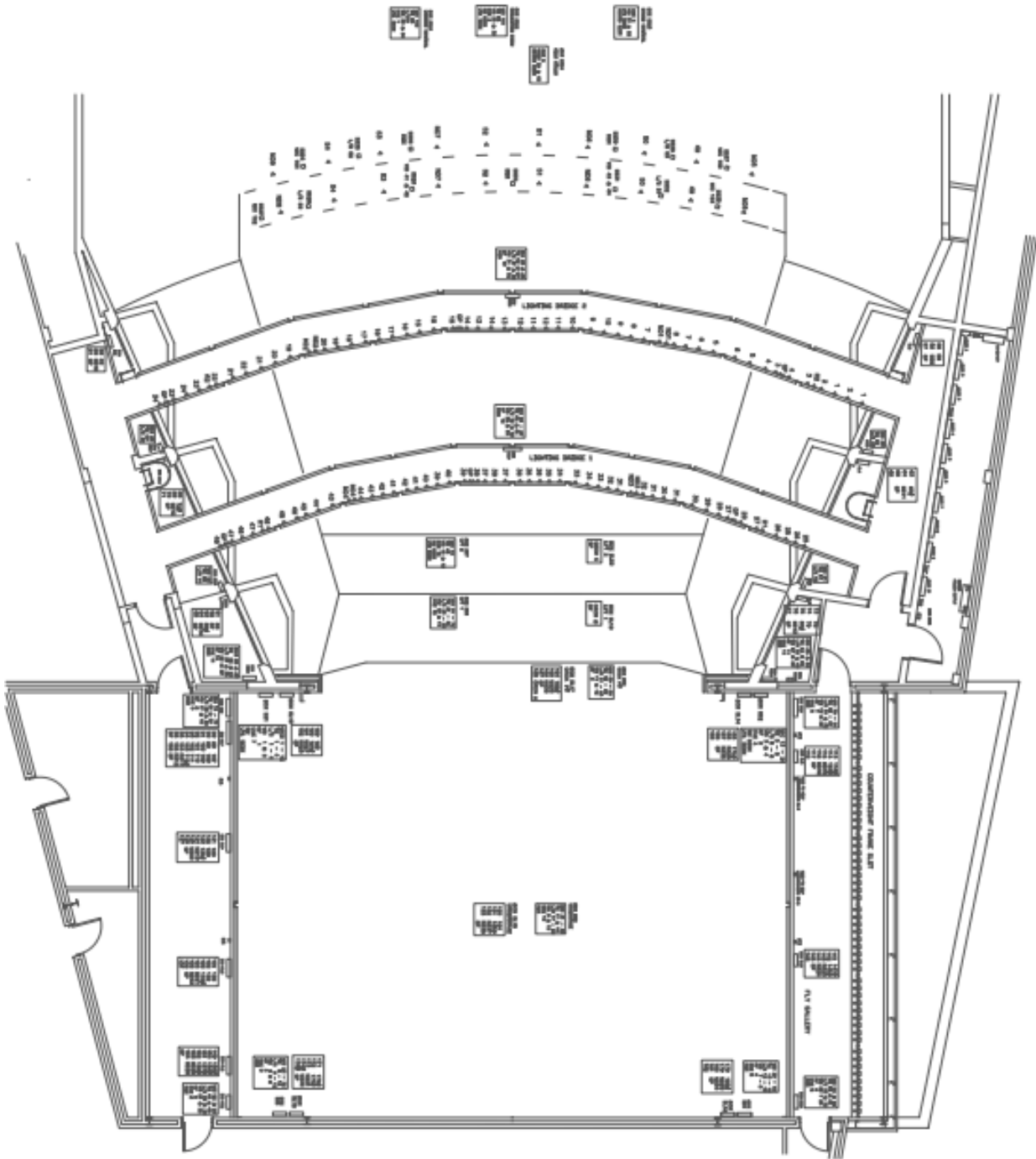
The plans below are **NOT TO SCALE**. PDF versions are available to download from the Millennium Forum Website or by request.



NOT TO SCALE

qia logo and contact information including phone numbers and website address.

NOT TO SCALE

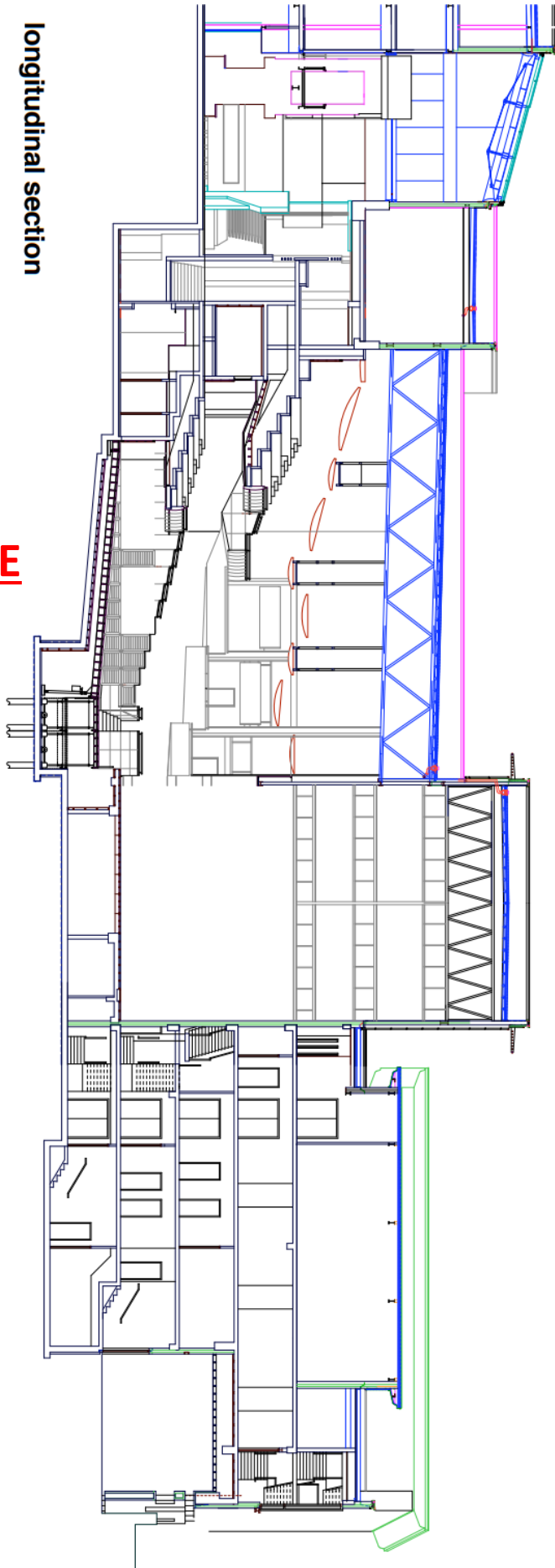


NO. 1	SEATING
NO. 2	STAGE
NO. 3	LOBBY
NO. 4	OFFICE
NO. 5	STAIR
NO. 6	ELEVATOR
NO. 7	RESTROOM
NO. 8	EXIT
NO. 9	STAIR
NO. 10	ELEVATOR
NO. 11	RESTROOM
NO. 12	EXIT
NO. 13	STAIR
NO. 14	ELEVATOR
NO. 15	RESTROOM
NO. 16	EXIT
NO. 17	STAIR
NO. 18	ELEVATOR
NO. 19	RESTROOM
NO. 20	EXIT

ajaw
 ARCHITECTURAL & INTERIOR DESIGN
 1000 10th Avenue, Suite 1000
 Denver, CO 80202
 Phone: (303) 733-1000
 Fax: (303) 733-1001
 Website: www.ajaw.com

longitudinal section

NOT TO SCALE



HANGING PLOT

An .xlsx file of the below is available to download on the Millennium Forum website.

SWL Double Purchase Counterweight Flying System: 500kg per bar

SWL Hemp Flying System: 80kg per bar

BAR	FLYING PIECE	DIST. (M)	KG	NOTES
1	HOUSE TABS	0		
2		0.1		
3		0.42		
4		0.63		
5				side bar - up and down SL
Hemp 1				
6		1.05		long cradle
Hemp 2				
7		1.57		
8 is omitted				
9				short bar- only comes in to 8m above stage
10 is omitted				
11		2.42		
12		2.63		
13		2.84		
14		3.05		
Hemp 3				
15		3.76		long cradle
Hemp 4				
16 is omitted				
17		4.18		
18		4.39		
19		4.6		
20		4.81		
21		5.02		
22		5.74		
23		5.95		
24		6.15		
25 is omitted				
26		6.57		long cradle
27 is omitted				
28		6.99		
Hemp 5				
29		7.2		
30 is omitted				
31		7.92		
32		8.13		
33		8.34		
34		8.55		
35		8.76		
36		8.97		
37		9.18		long cradle
38 is omitted				
39		9.9		
40		10.11		
41		10.32		
42		10.54		
43				side bar- up and down SR
44		10.96		
45		11.17		